

APPLICATION : Food Industry

LOCATION : France

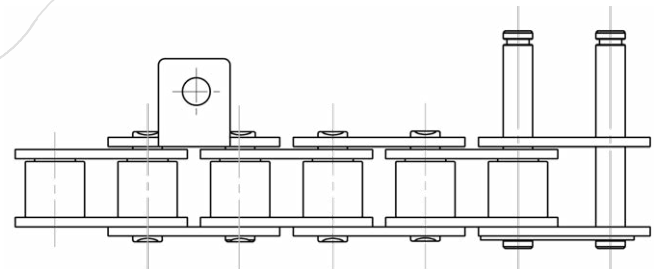
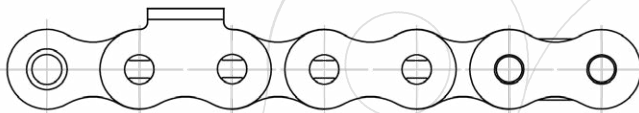
DIFFICULTY : Chemical agents

CHAIN TYPE : Stainless steel

CUSTOMER SUCCESS

An industrial manufacturer of fruit juice used on their Tetra Pak packaging machine some competitor's quality 12B-1 roller chains with stainless steel outer links and plastic inner links, with extended pins and K1 attachments.

But these chains working in a **humid atmosphere**, being **frequently washed with chemical agents and not lubricated**, they prematurely elongated and had to be changed after a period of one year.



On the advice from Sedis' engineers, the customer decided to replace the competitor's chains with plastic inner links by **high resistance SEDIS Alpha Premium Stainless Steel chains**. Thanks to treated stainless steel with increased surface hardness, the **resistance against wear and the breaking load have been considerably increased** ; and therefore the service life of the chain on this application was strongly improved. The customer installed the chains **4 years** ago and so far he has still not replaced it!



**RESISTANCE IN HUMID ATMOSPHERES
& TO WASHING BY CHEMICALS**



**CHAIN SERVICE LIFE
MULTIPLIED BY 4**



**REDUCTION OF
PRODUCTION SHUTDOWNS**



**SAVINGS ON
MAINTENANCE**

**CHAIN SERVICE LIFE
X 4 minimum**
compared to the competitor's chain