

PUBLIC WORKS

35, rue des Bas-Trévois
CS 90104 - 10003 Troyes Cedex - France
Tél : +33 (0)3 25 76 29 50 - Fax : +33 (0)3 25 80 31 62
web : www.sedis.com - e-mail : <https://sedis.com/contact>



For many years, SEDIS competences have been at the service of PUBLIC WORKS.



Chain for elevator



Asphalt mixing plant

In some applications as in bricks and tiles industries where the environment is often extremely abrasive (dust, residuals...) SEDIS has the solution against wear due to abrasion :

DELTA® HR RANGE & THE DELTA® TREATMENT

For extreme operating conditions



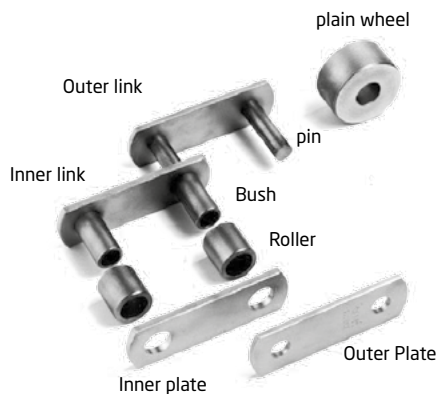
The Delta treatment is especially suitable for:

- > Abrasive environment
- > High speeds
- > Irregular or non-existent lubrication

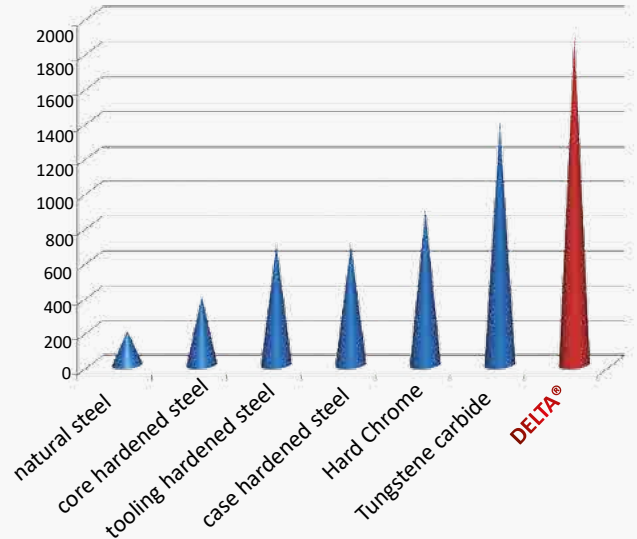
What is the Delta® treatment ?

A thermochemical treatment invented and implemented by **SEDIS**, which is obtained after carburising, provides the chain's links with remarkable ability to withstand **abrasion and oxydation** of articulations. This ability is guaranteed by a surface hardness (**1800 Vickers**) that is almost 3 times higher than that obtained by using traditional carbisation (700 Vickers).

Besides SEDIS is the only manufacturer to operate this type of treatment on large diameter pins.



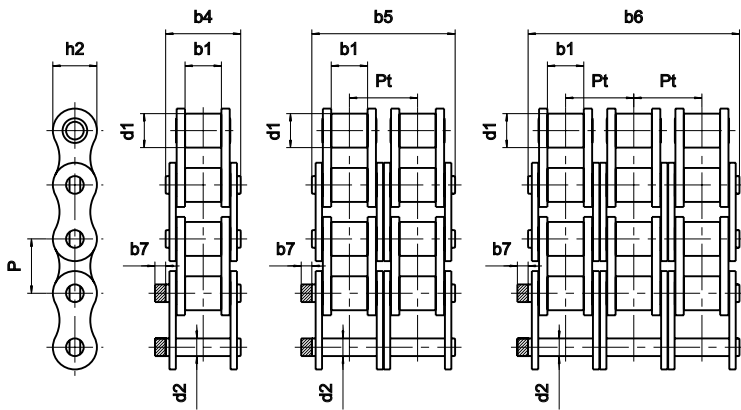
Comparison of hardness (in HV)



Where to find the Delta® treatment in the SEDIS range?

- > Transmission chains
- > Standard conveyor chains
- > Special conveyor chains

Transmission chains - Delta® HR range



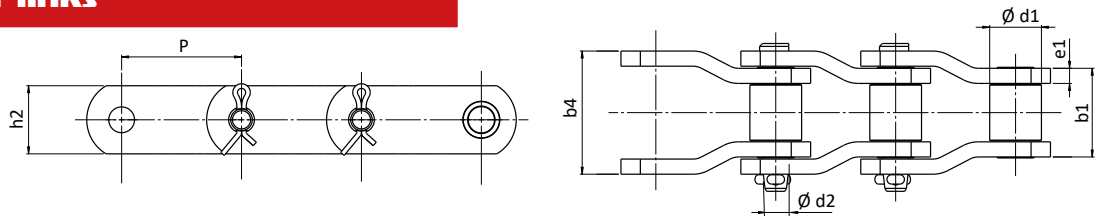
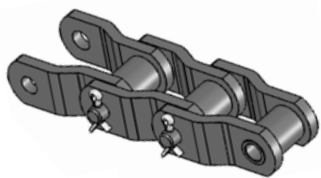
BS

REFERENCE		DIMENSIONS (MM)								BREAKING LOAD		
ISO 606	SEDIS	Pitch	roller Ø d1	Inner width b1	Width over pins b4/b5/b6	Pin Ø d2	Plate height h2	Transv. pitch Pt	Pin ext. B7	ISO 606	min	aver.
BS SIMPLEX												
08B-1	7ND	12,7	8,51	7,75	16,6	4,45	11,8		1,5	17,8	18,2	20,4
10B-1	11ND	15,875	10,16	9,65	19	5,08	13,7		1,5	22,2	23	27,2
12B-1	13ND	19,05	12,07	11,68	22,3	5,72	16,2		1,5	28,9	30,5	34,8
16B-1	15TD	25,4	15,88	17,02	35,1	8,28	20,8		3	60	75	87
20B-1	17TD	31,75	19,05	19,56	40,5	10,19	25,4		6,1	95	110	119
24B-1	18TD	38,1	25,4	25,4	53,1	14,63	32,3		6,6	160	180	198
28B-1	20TD	44,45	27,94	30,95	65,1	15,9	37		7,4	200	235	251,5
32B-1	22TD	50,8	29,21	30,99	63,6	17,81	42,3		7,9	250	300	321
BS DUPLEX												
08B-2	207ND	12,7	8,51	7,75	30,6	4,45	11,8	13,92	1,5	31,1	36,4	40,8
10B-2	211ND	15,875	10,16	9,65	35,75	5,08	13,7	16,59	1,5	44,5	46	54,4
12B-2	213ND	19,05	12,07	11,68	41,8	5,72	16,2	19,46	1,5	57,8	61	69,5
16B-2	215TD	25,4	15,88	17,02	68	8,28	20,8	31,88	3	106	150	174
20B-2	217TD	31,75	19,05	19,56	77	10,19	25,4	36,45	6,1	170	220	239,8
24B-2	218TD	38,1	25,4	25,4	101,8	14,63	32,3	48,36	6,6	280	360	396
28B-2	220TD	44,45	27,94	30,95	124,7	15,9	37	59,56	7,4	360	470	502,9
32B-2	222TD	50,8	29,21	30,99	122,8	17,81	42,3	58,55	7,9	450	600	642
BS TRIPLEX												
09B-3	307ND	12,7	8,51	7,75	44,6	4,45	11,8	13,92	1,5	44,5	54,6	61,2
10B-3	311ND	15,875	10,16	9,65	52,3	5,08	13,7	16,59	1,5	66,7	69	81,6
12B-3	313ND	19,05	12,07	11,68	61,4	5,72	16,2	19,46	1,5	86,7	91,5	104,3
16B-3	315TD	25,4	15,88	17,02	99,9	8,28	20,8	31,88	3	160	225	261
20B-3	317TD	31,75	19,05	19,56	113,5	10,19	25,4	36,45	6,1	250	330	359,7
24B-3	318TD	38,1	25,4	25,4	150,2	14,63	32,3	48,36	6,6	425	540	594
28B-3	320TD	44,45	27,94	30,95	184,6	15,9	37	59,56	7,4	530	705	754,4
32B-3	322TD	50,8	29,21	30,99	181,7	17,81	42,3	58,55	7,9	670	900	963

ASA

REFERENCE		DIMENSIONS (MM)								BREAKING LOAD		
ISO 606	SEDIS	Pitch	roller Ø d1	Inner width b1	Width over pins b4/b5/b6	Pin Ø d2	Plate height h2	Transv. pitch Pt	Pin ext. B7	Norme ISO 606	min	
ANSI SIMPLEX												
08A-1	40-1	12,7	7,93	7,85	16,3	3,98	11,5		1,5	13,9	18	
10A-1	50-1	15,875	10,15	9,55	20,45	5,09	13,7		1,5	21,8	28	
12A-1	60-1	19,05	11,91	12,65	25,4	5,96	16,2		4	31,3	38	
16A-1	80-1	25,4	15,88	15,87	32,8	7,94	20,8		4	55,6	62	
20A-1	100-1	31,75	19,05	19,05	39,6	9,53	25,4		6,1	87	99	
24A-1	120-1	38,1	22,22	25,4	49,6	11,10	35,2		6,6	125	140	
28A-1	140-1	44,45	25,4	25,4	53,5	12,7	42		7	170	178	
32A-1	160-1	50,8	28,58	31,75	64	14,27	48,2		7	223	228	
ANSI DUPLEX												
08A-2	40-2	12,7	7,93	7,85	30,8	3,98	11,5	14,38	1,5	27,8	36	
10A-2	50-2	15,875	10,15	9,55	38,9	5,09	13,7	18,1	1,5	43,6	56	
12A-2	60-2	19,05	11,91	12,65	48,3	5,96	16,2	22,78	4	62,3	76	
16A-2	80-2	25,4	15,88	15,87	62,3	7,94	20,8	29,29	4	111,2	124	
20A-2	100-2	31,75	19,05	19,05	75,5	9,53	25,4	35,76	6,1	174	198	
24A-2	120-2	38,1	22,22	25,4	95,3	11,1	35,2	45,44	6,6	250	280	
28A-2	140-2	44,45	25,4	25,4	102,6	12,7	42	48,87	7	340	356	
32A-2	160-2	50,8	28,58	31,75	123	14,27	48,2	58,55	7	446	456	
ANSI TRIPLEX												
08A-3	40-3	12,7	7,93	7,85	45,3	3,98	11,5	14,38	1,5	41,7	54	
10A-3	50-3	15,875	10,15	9,55	57	5,09	13,7	18,1	1,5	65,4	84	
12A-3	60-3	19,05	11,91	12,65	71,1	5,96	16,2	22,78	4	93,4	114	
16A-3	80-3	25,4	15,88	15,87	91,8	7,94	20,8	29,29	4	166,8	186	
20A-3	100-3	31,75	19,05	19,05	112,1	9,53	25,4	35,76	6,1	261	297	
24A-3	120-3	38,1	22,22	25,4	140,9	11,1	35,2	45,44	6,6	375	420	
28A-3	140-3	44,45	25,4	25,4	152,4	12,7	42	48,87	7	510	534	
32A-3	160-3	50,8	28,58	31,75	182	14,27	48,2	58,55	7	669	684	

Chains with cranked links

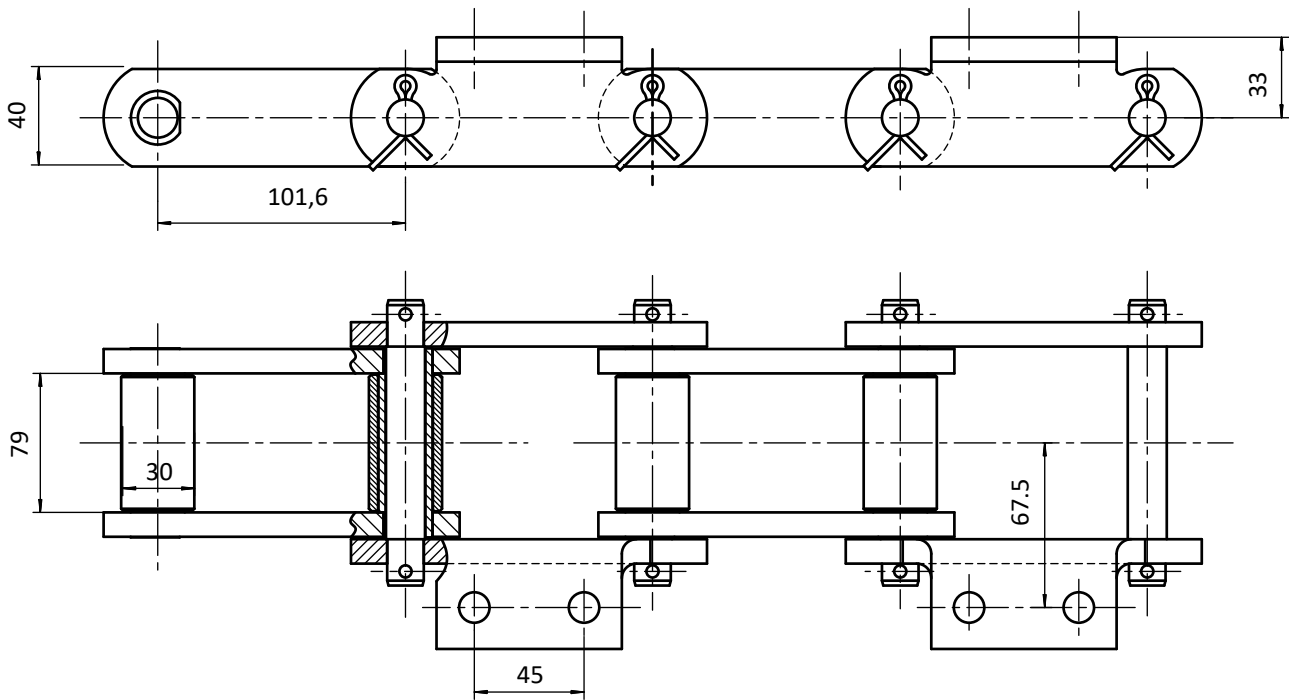


N°	Pitch (mm)	Breaking load (kN)	Plates height h2	Plates thickness e1	Pin diameter d2	Width over the pins b4	Roller diameter d1	Inner width b1
1	50.8	29	41	7.9	15.1	81.3	28.7	31
2	63.5	52	60	10	22.2	102.9	39.6	38.1
3	66.3	12	29	6	11.1	69.3	22.4	26.9
4	77.9	49	51	10	19.1	99.1	41.4	38.9
5	78.1	21	38	8	15.9	88.1	31.8	36.6
6	78.1	45	44	10	16.5	94.5	31.8	37.3
7	78.1	34	40	10	16.5	95.8	31.8	37.3
8	78.5	63	57	13	22.2	113.8	44.5	36.6
9	88.9	68	57	13	22.2	113.8	44.5	36.6
10	101.6	113	83	14	30.2	140.2	57.2	54.1
11	103.2	68	57	13	22.2	128.3	44.5	49.3
12	103.5	77	60	14	13.8	131.8	45.2	48.5
13	103.5	77	60	14	25.4	131.3	45.2	48.5
14	114.3	94	76	14	27.9	134.9	57.2	50.8
15	127	117	89	16	31.8	160.3	63.5	69.9
16	127	149	89	19	34.9	169.7	63.5	63.5
17	139.7	190	102	19	38.1	195.3	76.2	75.2
18	152.4	190	102	19	38.1	185.2	76.2	74.7

Elevator chains

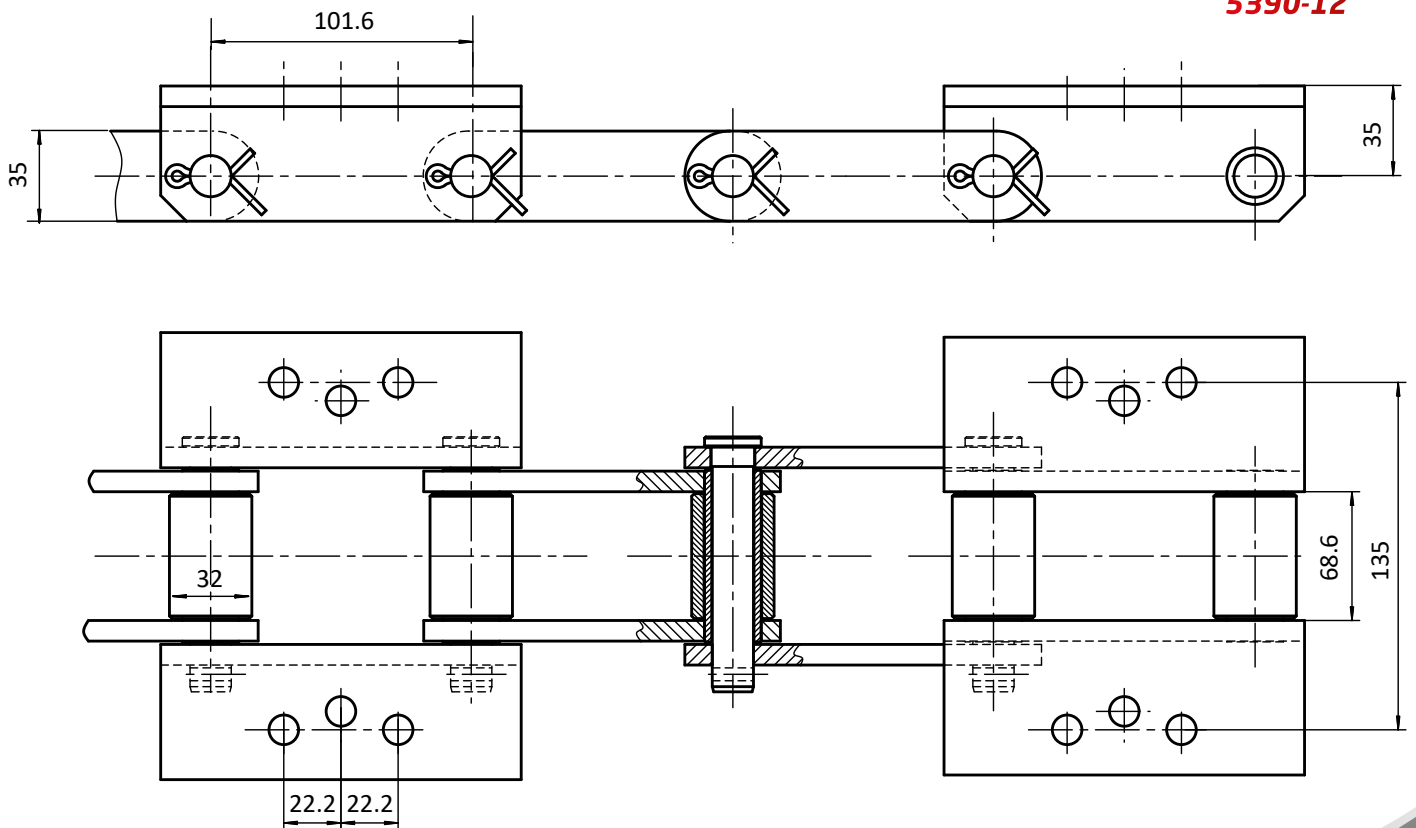
TWIN-CHAIN ELEVATOR

5390-11



SINGLE-CHAIN ELEVATOR

5390-12

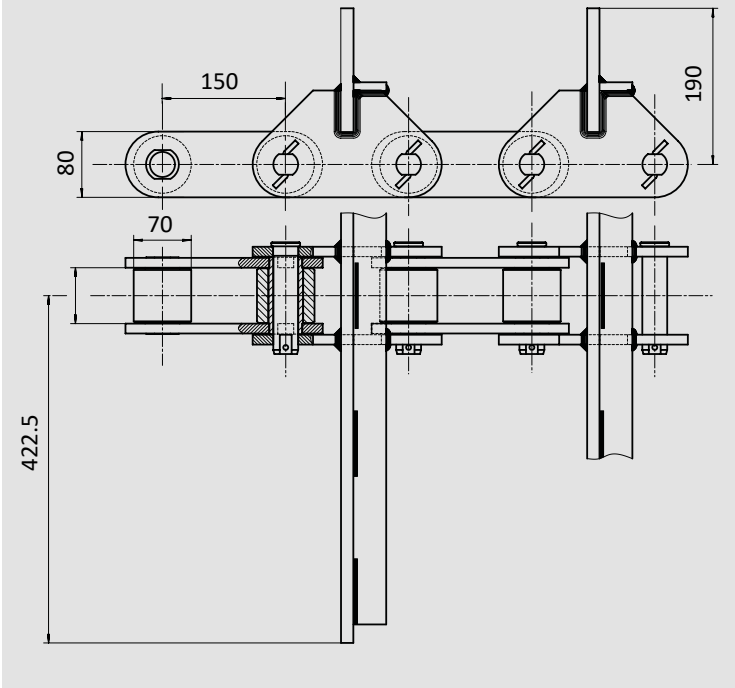


Chains for inclined conveyors

CHAINS WITH WELDED SCRAPERS

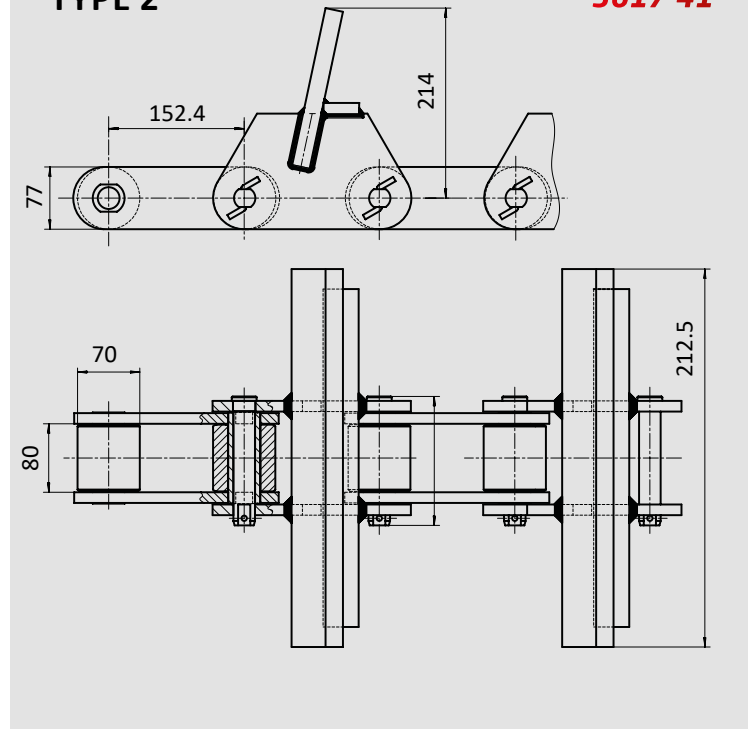
TYPE 1

5461-35



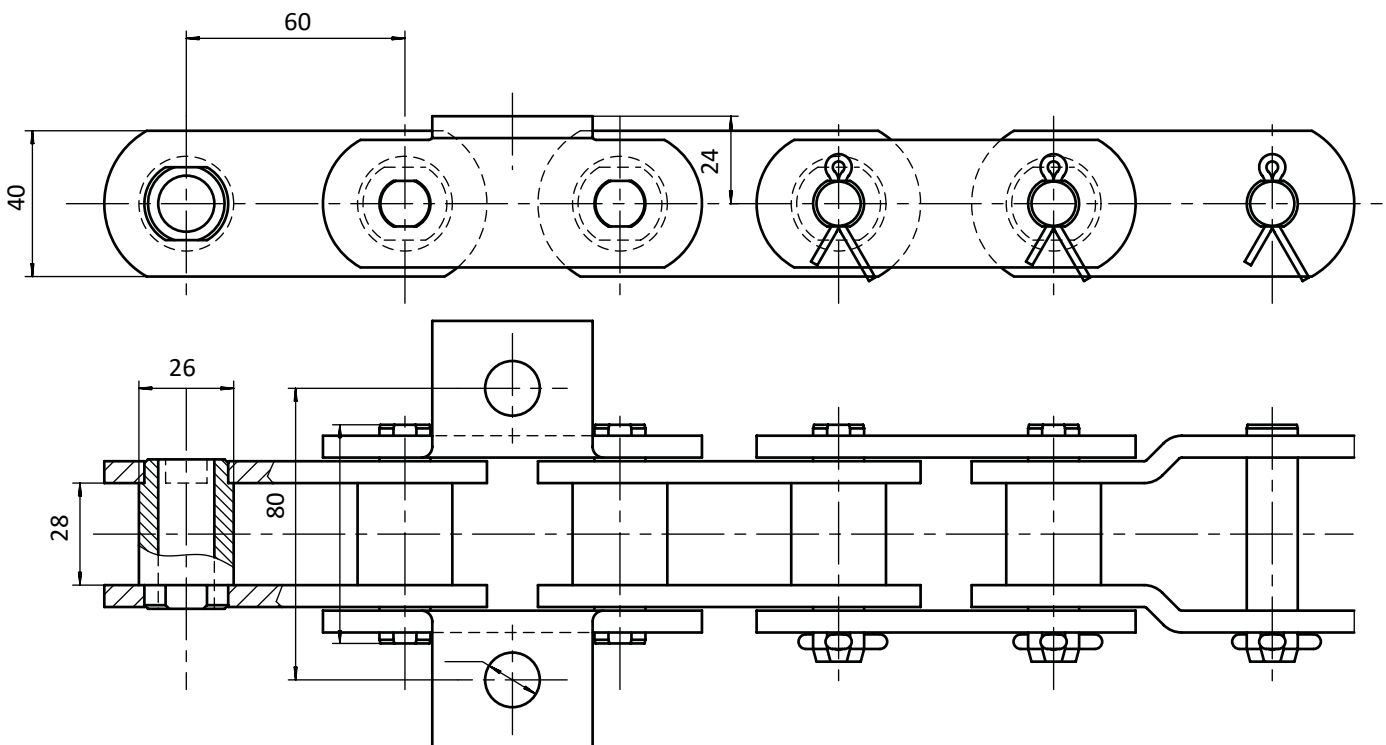
TYPE 2

5617-41



CHAINS WITH K1 ATTACHMENTS

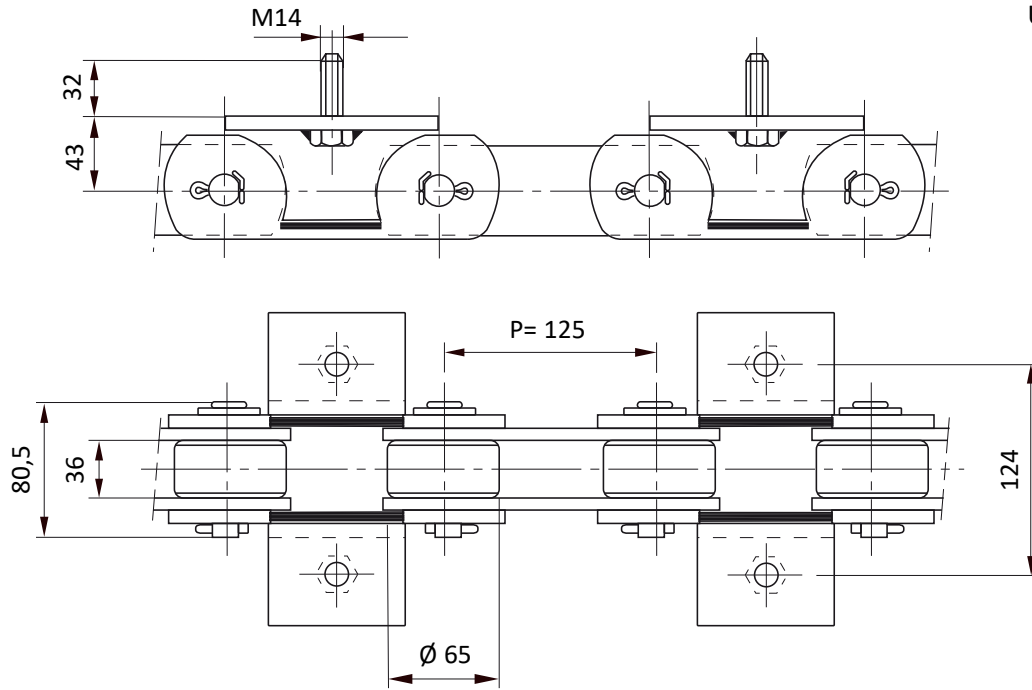
5709-04



Caterpillar chain for amphibian vehicle

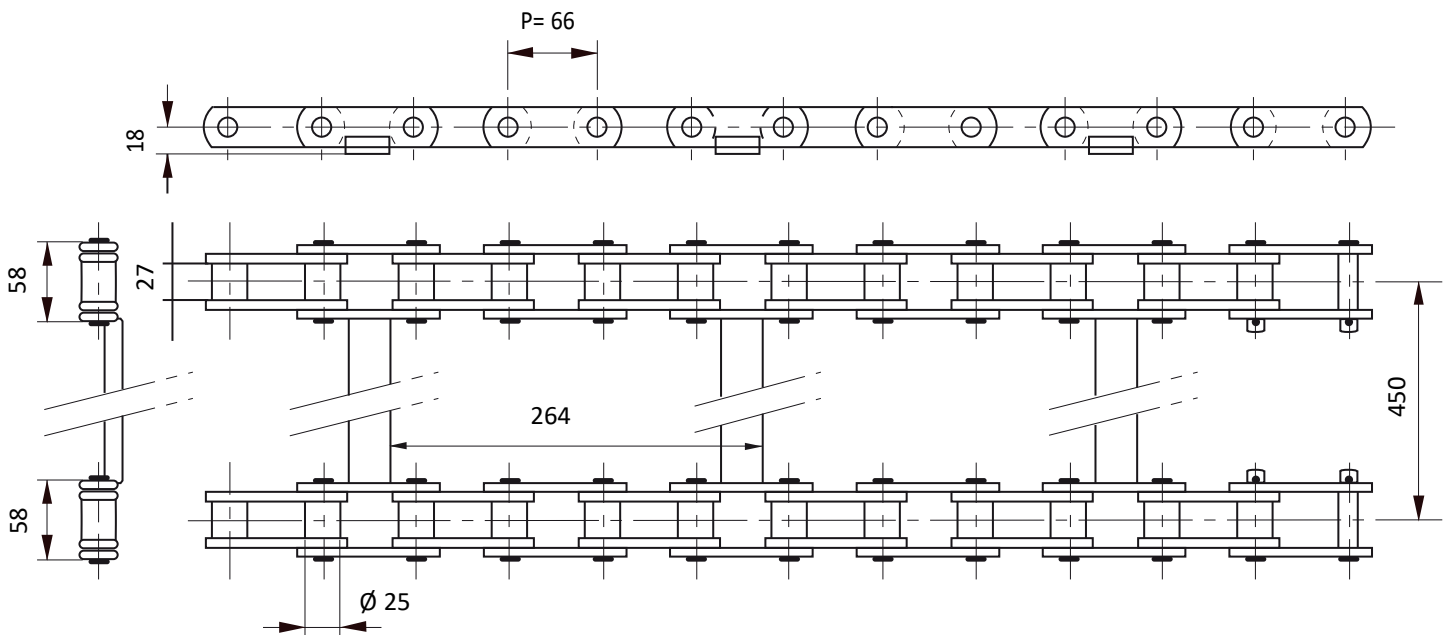
5347-08

UTS: 275 kN



Chain for road salt spreader

5710-01



Sprockets - Wheels - Crowns - Discs

