

*A recognized  
know-how*

# SUGAR MILLS

35, rue des Bas-Trévois  
CS 90104 - 10003 Troyes Cedex- France  
Tél : +33 (0)3 25 76 29 50 - Fax : +33 (0)3 25 80 31 62  
web : [www.sedis.com](http://www.sedis.com) - e-mail : <https://sedis.com/contact>



***Your satisfaction is the  
best reward for **Sedis*****



**Sugar grains**



**Unrefined sugar**



**Fine granulated sugar**

## ALPHA ( $\alpha$ ) chain range

- > The **Sedis ALPHA** chain for demanding applications
- > The **ALPHA Inox** stainless steel chain for food



## DELTA<sup>®</sup> chain range

### ANTI-WEAR : DELTA<sup>®</sup> HR



- > In an abrasive environment, at high speed, with random maintenance
- > Thanks to an exclusive **Sedis** thermochemical treatment, the **DELTA<sup>®</sup> HR** chain links attain extremely high hardnesses to the order of 1800 HV
- > Control of the friction coefficient

### ANTI-CORROSION : DELTA<sup>®</sup> TITANIUM 2

#### TREATMENT GUARANTEED TO BE 100% FREE OF CHROMIUM VI

- > An anti-wear and anti-corrosion chain : **DELTA<sup>®</sup> TITANIUM 2**
- > High mechanical resistance : no hydrogen embrittlement
- > Certification : NO HEAVY METALS in conformity with European legislation (directives 2000/53/EC and 2002/95/EC).



### NO MAINTENANCE : DELTA<sup>®</sup> GREEN



#### (100% ECOLOGICAL)

- > No pollution of transported products
- > Large reduction of maintenance costs
- > No lubricant
- > Operates in water
- > High and low temperature applications



Brown sugar cubes



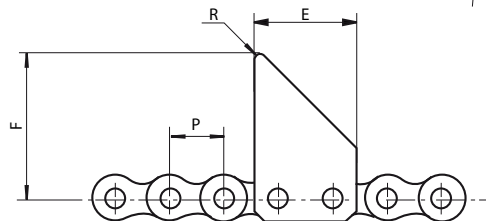
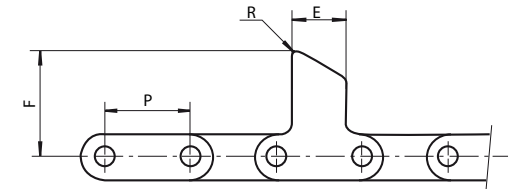
White cane sugar



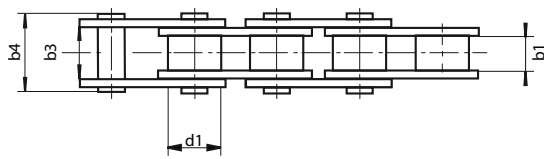
White sugar cubes

## CANE SUGAR

### Continuous harvester and loader chains

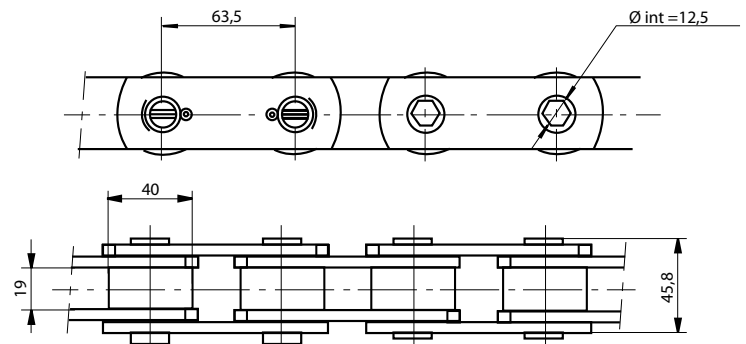
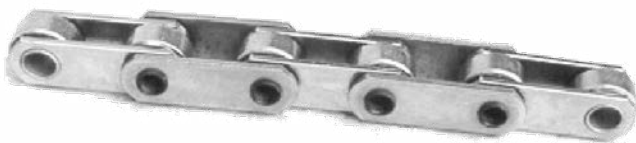


Dimensions in mm



Chain	P	d1	b1	b3	b4	E	F	R	Rr min. kN
<i>Straight plates</i>									
5310-04	63,5	25,40	25,33	38,05	53,1	50	76	4	180
5310-05	63,5	25,40	25,33	38,05	53,1	50	134	4	180
<i>Hollow plates</i>									
5374-17	31,75	19,05	19,42	29,15	40,5	58	82	3	105
5289-20	38,1	25,40	25,33	38,05	53,1	75	76	4	180

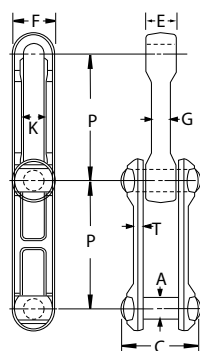
### 5419-11



### Forged chains

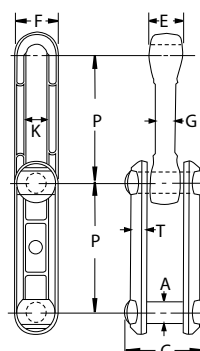


#### Type 1



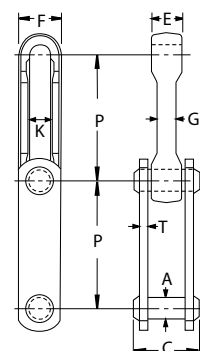
not riveted

#### Type 2



not riveted

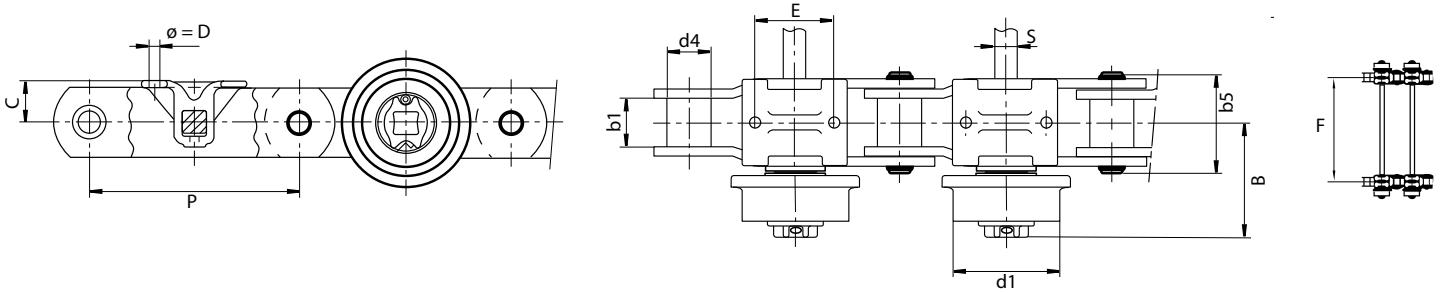
#### Type 3



Straight plates

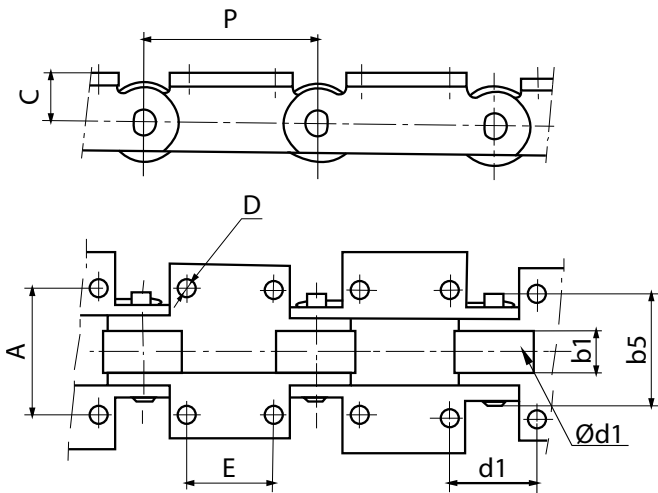
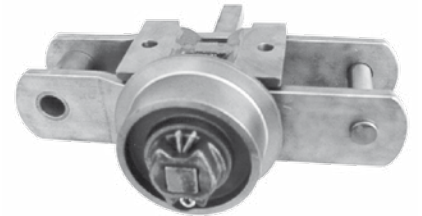
Chain	Type	Avg pitch	Min breaking strength	Weight per metre	A	C	E	F	G	K	T
		mm	KN	Kg/m	Dimensions in mm						
CFORX348	2	76,2	108,9	3,1	12,7	44,4	19,05	26,9	12,7	13,5	10,4
CFOR S348	3	76,2	109	3,6	12,7	44,4	19,05	26,9	12,7	13,5	6,4
CFOR 458	1	102,39	218	4,6	15,88	55,6	25,9	35	15,7	17,5	7,9
CFOR X458	2	102,39	218	4,8	15,88	55,6	25,9	35	15,7	17,5	11,9
CFORS458	3	102,39	218	5,2	15,88	52,3	25,9	35	15,7	17,5	7,9
CFOR 698	1	153,2	590,2	17	28,58	95,2	39,6	68,3	25,4	31,8	14,2
CFOR S698	3	153,2	590,2	18	28,58	82,6	39,6	68,3	25,4	31,8	12,7

**Chains for a cane conductor (supplied with or without shutters and accessories)**



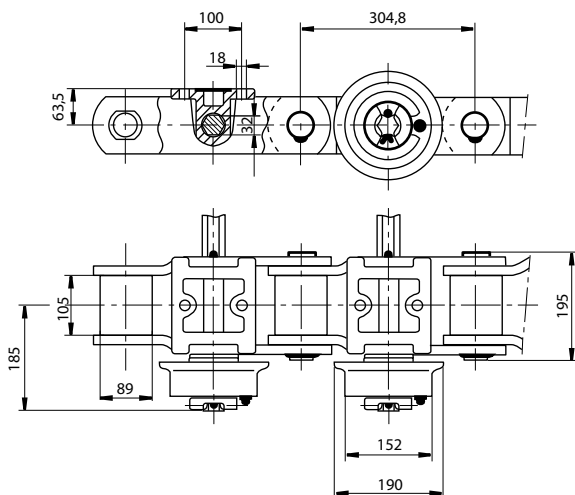
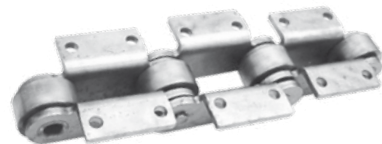
Dimensions in mm

Chain	P	b1	d4	b5	C	D	E	d1	S	B	F	Rr min. kN
5109-19	304,8	57,1	42,00	113	50,7	16	115	127,0	26	133,5	1780	314
5109-32		57,1	42,00	113	50,7			127,0	26	133,5	1980	314
5109-21		63,5	44,45	129	50,2			127,0	26	142,0	1510	451
5109-17		63,5	44,45	129	50,2			127,0	26	142,0	1580	451
5109-20		63,5	44,45	129	50,2			127,0	26	142,0	1680	451
5109-12		63,5	44,45	129	50,2			127,0	26	142,0	1780	451
5109-16		63,5	44,45	129	50,2			127,0	26	142,0	2080	451
5109-02		63,5	44,45	129	50,2			127,0	26	142,0	2280	451
5109-18		69,8	63,50	145	60,2			152,4	32	166,2	1680	627
5109-01		69,8	63,50	145	60,2			152,4	32	166,2	2240	627

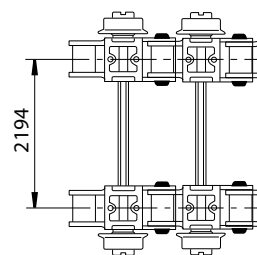


Dimensions in mm

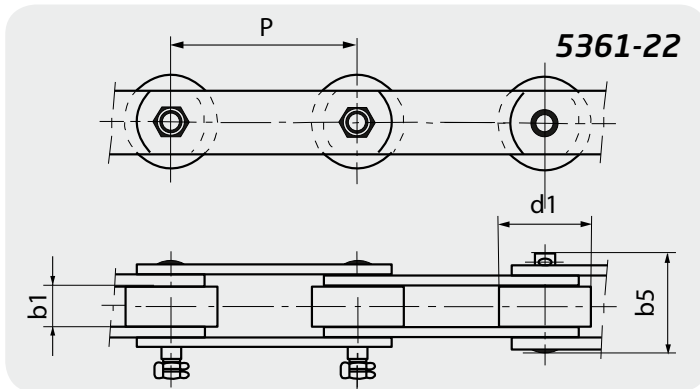
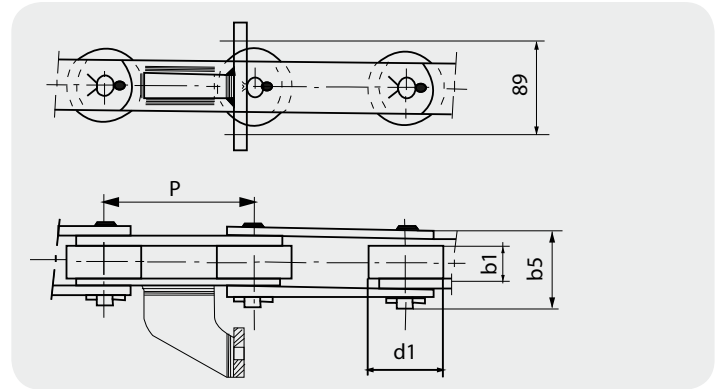
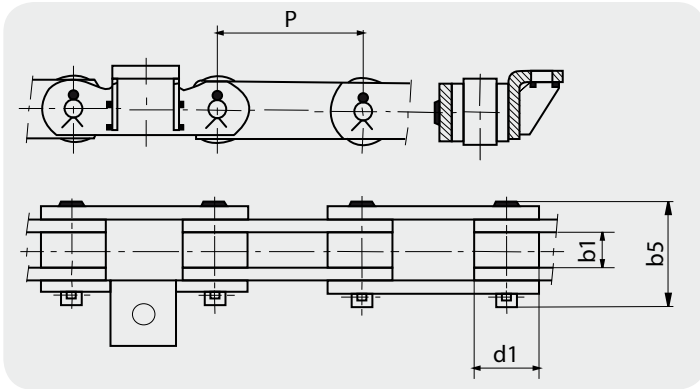
Chain	P	b1 mini	b5 mini	d1	C	D	E	A	Rr min. kN
5361-76	152,4	38,1	98	70	42,0	14,5	76,2	111	310
5361-60	152,4	38,1	98	76	42,0	14,5	76,2	111	310
5617-06	152,4	38,1	98	70	45,0	14,5	60,0	130	315
5361-31	152,4	43,1	100	76	42,0	14,0	60,0	125	315
5361-38	152,4	37,2	101	76	44,5	14,5	76,2	111	471
5361-32	152,4	56,1	113	85	42,0	14,0	60,0	150	500
5617-95	152,4	43,5	100,6	80	44,0	14,0	60,0	125	315



**5371-01**



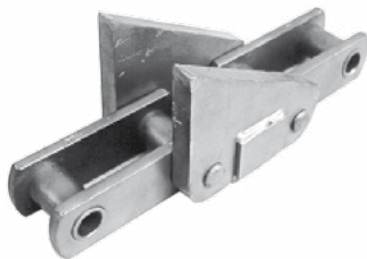
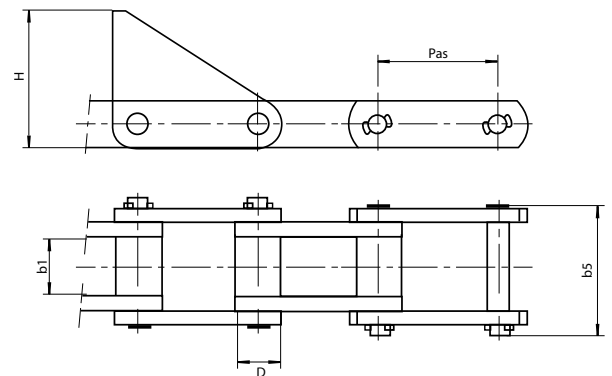
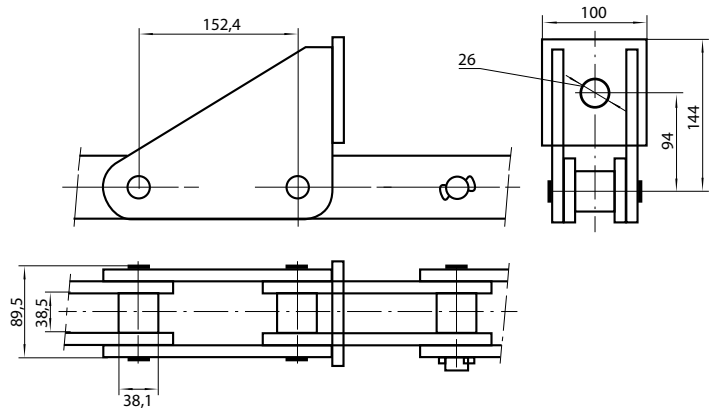
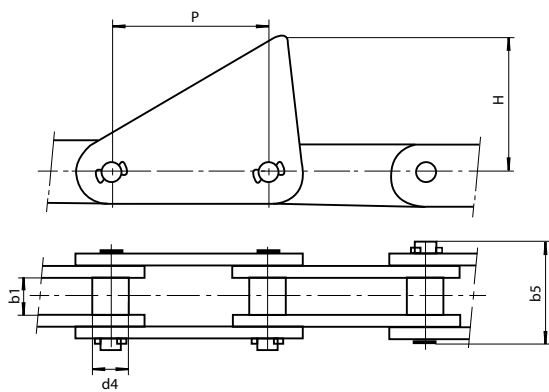
## Intermediate conveyor chains



Dimensions in mm

Chain	Pas	d1	b1	b5	kN
5361-59	152,4	70	38,5	100	310
5361-29	152,4	76	34	82,5	220
5361-22	152,4	76	34	82,5	220

## Hook conveyor chains



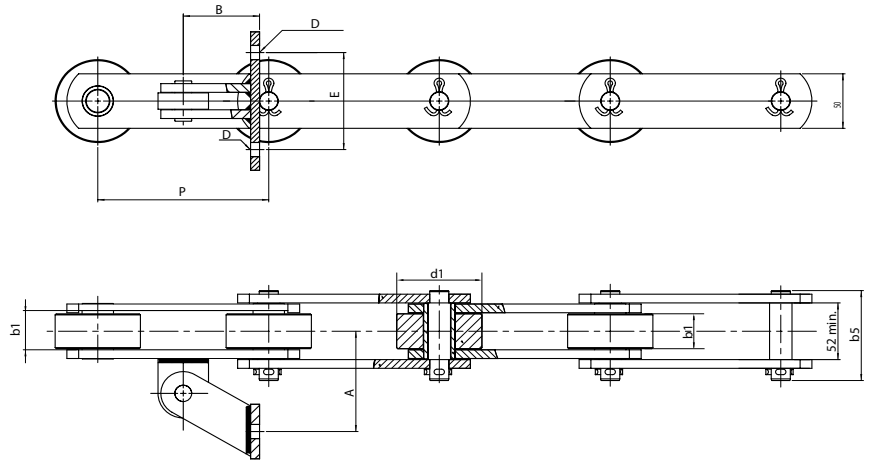
Dimensions in mm

Chain	Pitch	b1 min.	d4	b5 max.	H	Rr kN min.
5315-02	135,0	39,0	28	84,7	150	175
5361-14	152,4	38,1	35	96,6	160	310

Dimensions in mm

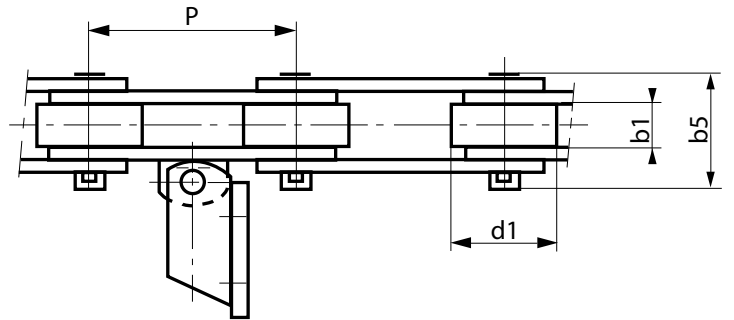
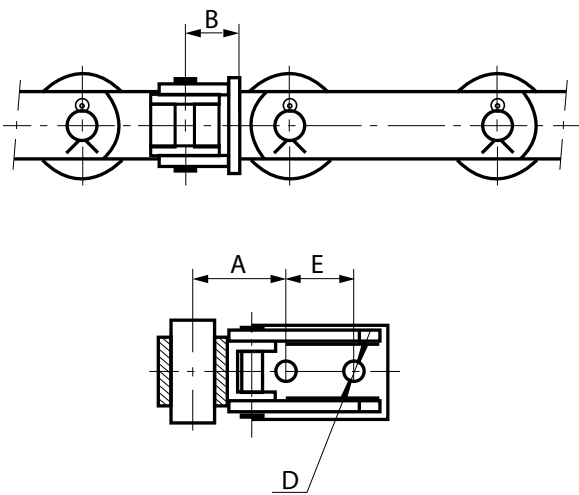
Chain	Pitch	b1 min.	b5 max.	H	D
5390-06	101,60	47	109,5	115	36
5873-01	153,67	73	155,0	152	44

Residue conveyor chains



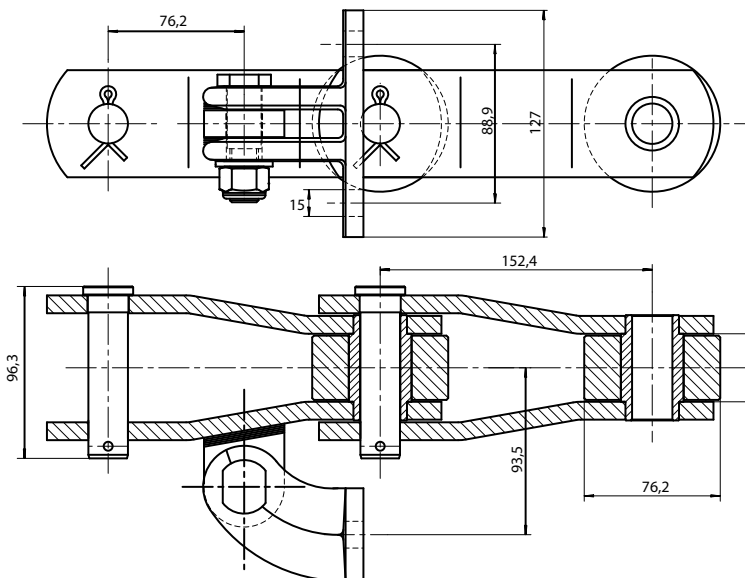
Dimensions in mm

Chain	Pitch	b1 min.	d1	b5 max.	D	A	B	E	Rr kN min.
5617-17	152,4	33,6	76	85	13	92	68	89	220
5617-13	152,4	38,1	76	99	13	92	68	89	310
5783-05	350	66,0	110	145	22	160	100	160	900



Dimensions in mm

Chain	Pitch	b1 min.	d1	b5 max.	D	A	B	E
5617-15	152,4	38,1	76	98,5	13	98,5	67	150
5617-38	152,4	34,0	76	82,5	14	68,0	40	50

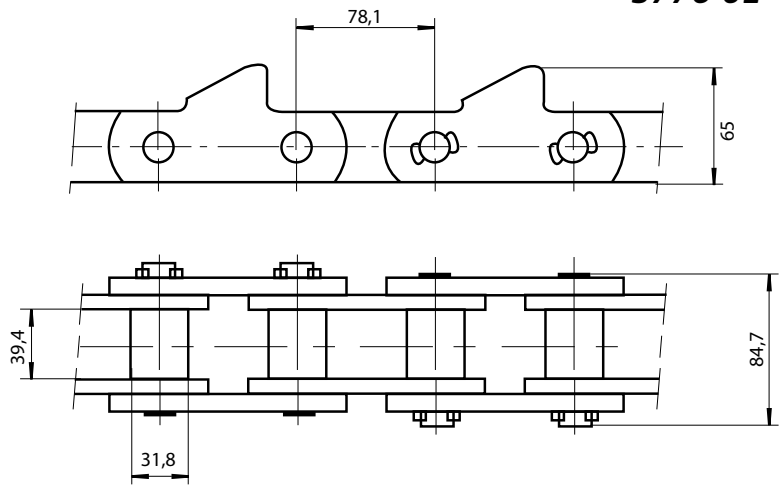


**5617-32**  
Tensile strength 450 kN

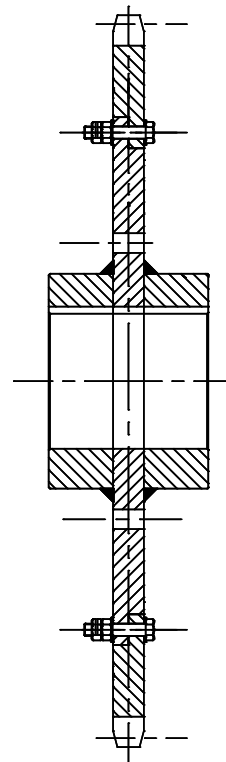
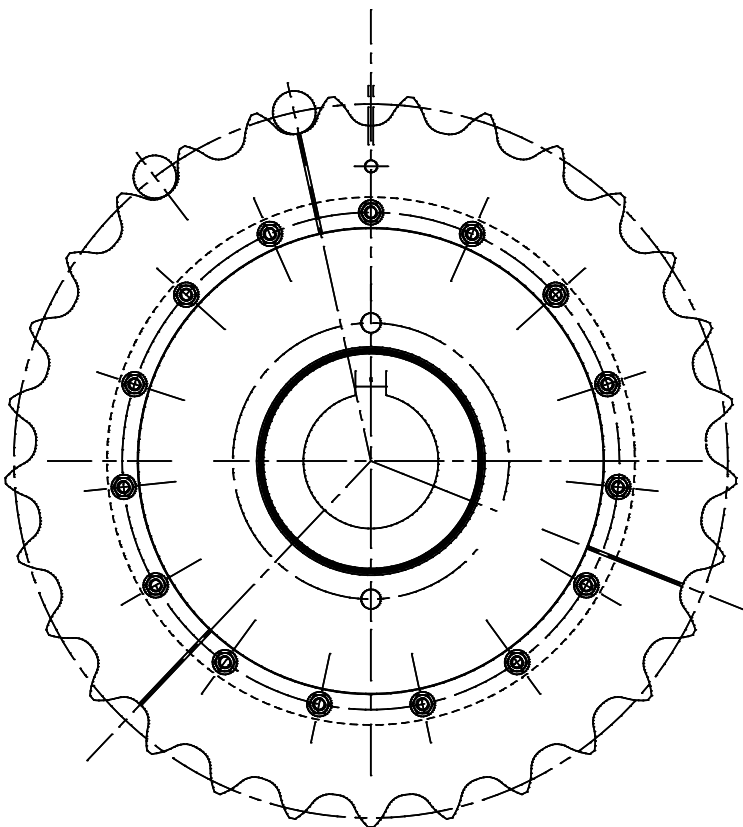
**Boiler chains**

Tensile strength 100 kN

5776-01



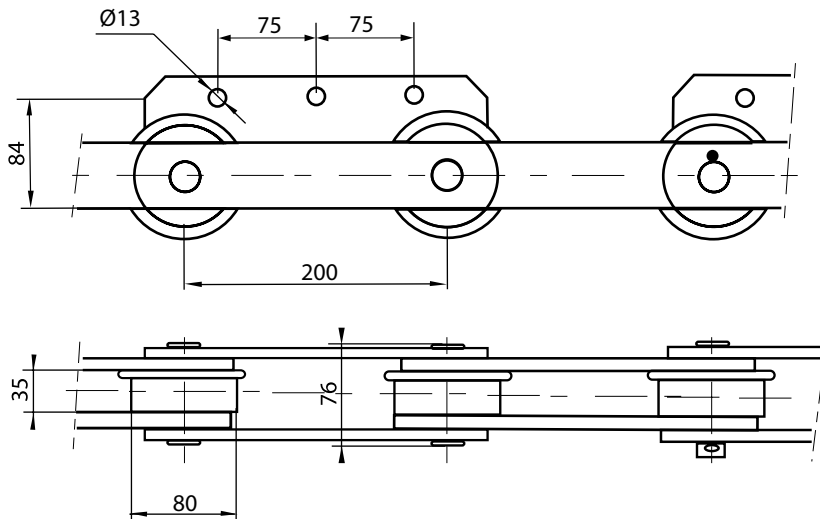
**Pinions - Wheels - Discs for sugar cane and beet sugar mills**





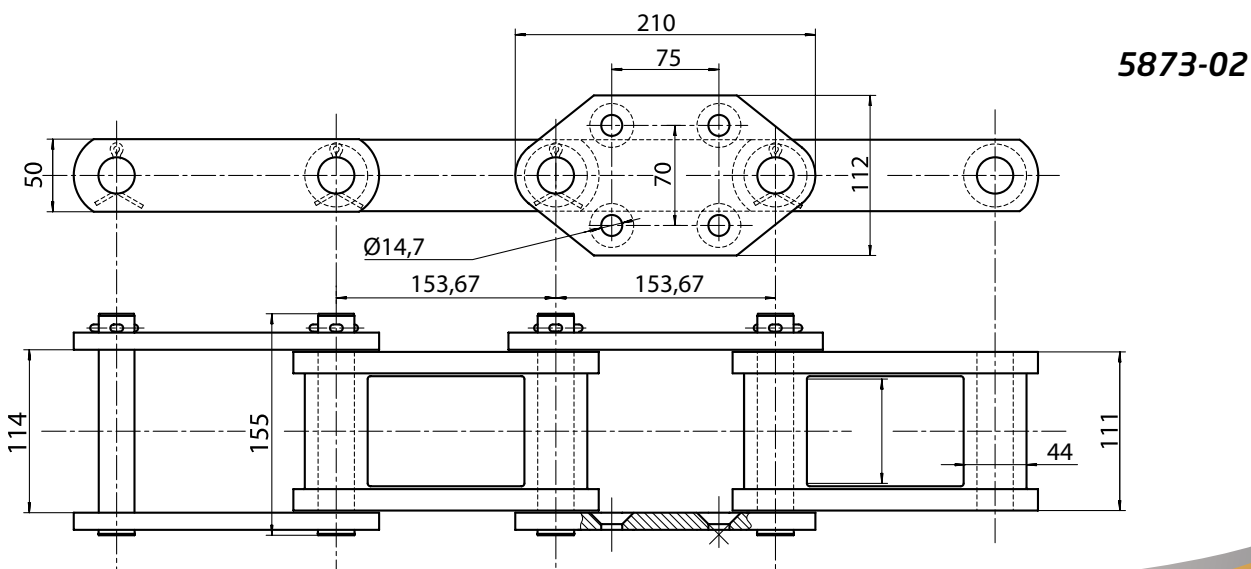
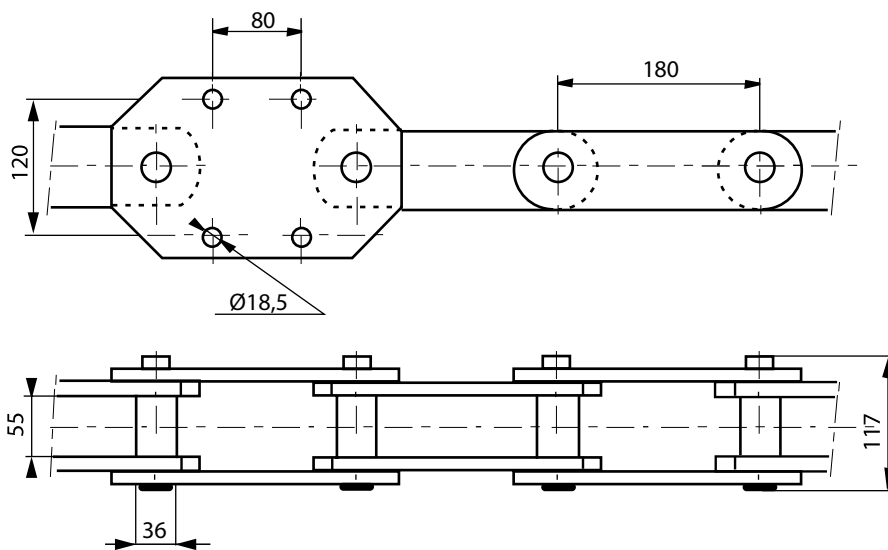
# BEET SUGAR

Chains for stone removers



**5308-40**  
Tensile strength 180 kN

**5334-03**  
Tensile strength 320 kN

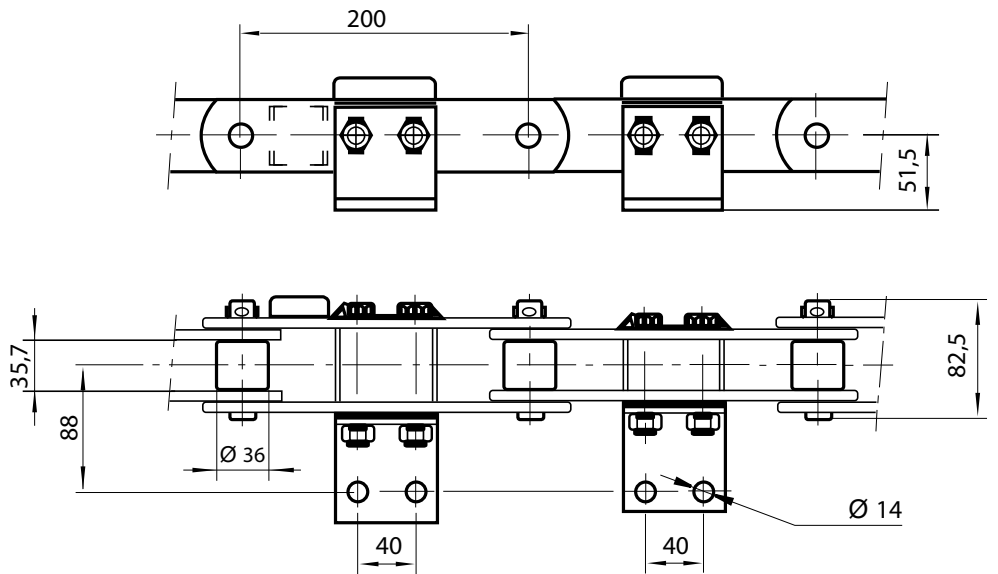
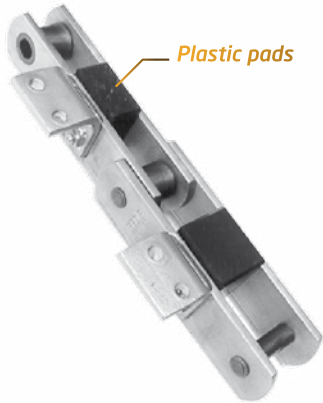


**5873-02**

**Pre-diffusion or diffusion chains**

**5308-13**

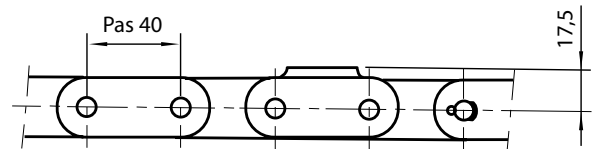
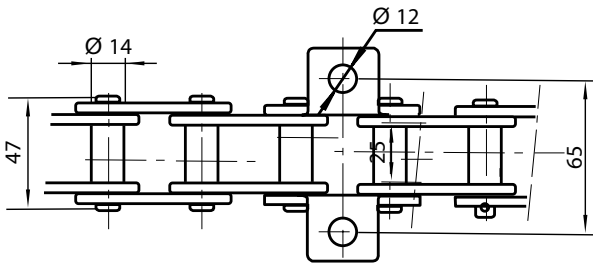
**Tensile strength 160 kN**



**Chains for layer folder**

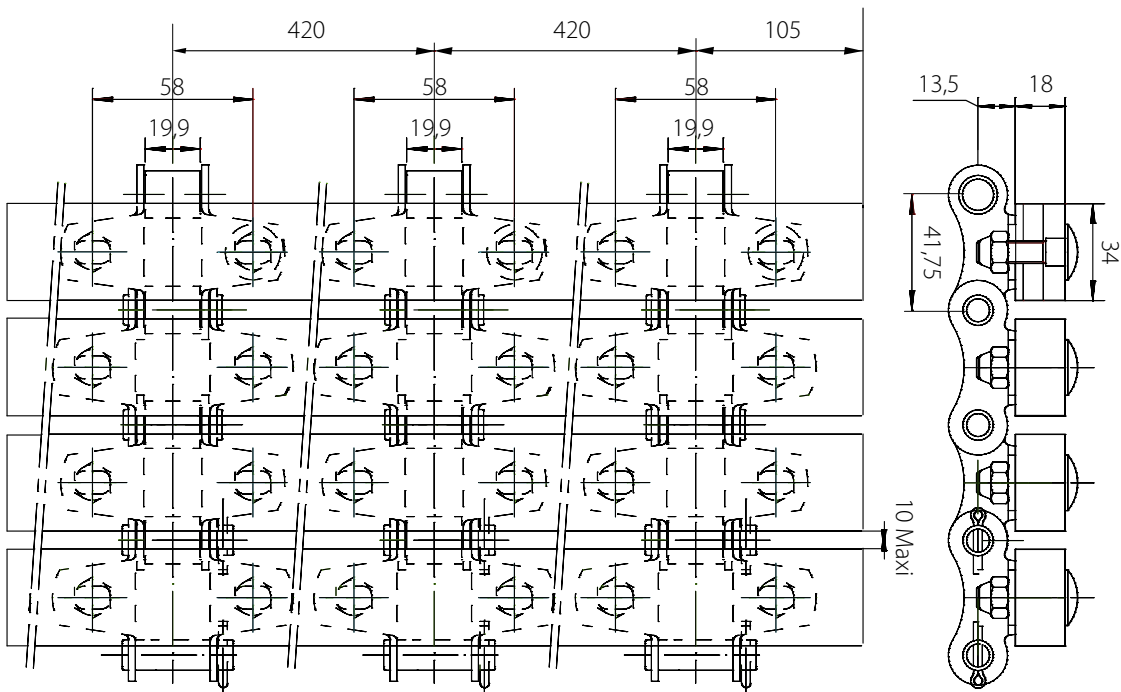
**5683-05**

**Tensile strength 52 kN**

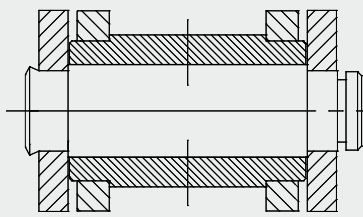
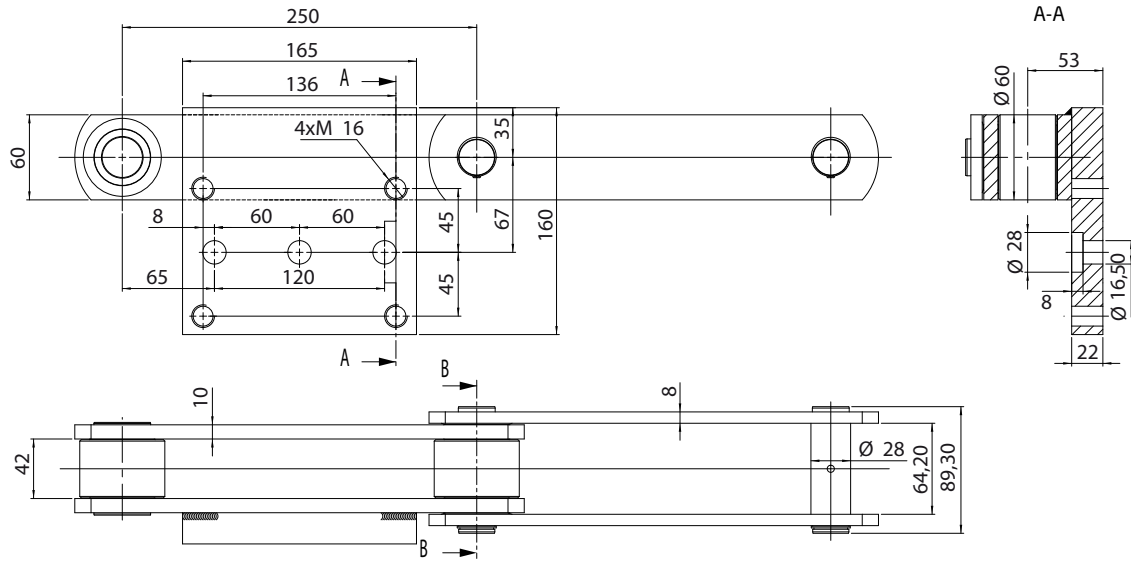


**Chains for reception centre**

**5060-29**

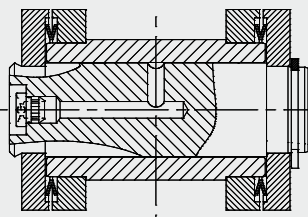


**Waste removal chains**



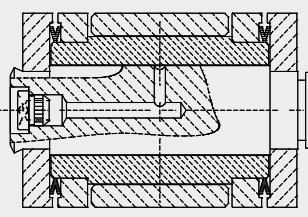
**Version 1**  
Basic link  
(carburized link)

**2 campaigns**



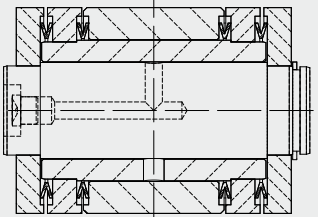
**Version 2**  
version 1  
+ Delta® treated link  
+ link sealing  
+ axis/bushing lubrication

**4 campaigns**



**Version 3**  
version 2  
+ rollers

**5 campaigns**



**Version 4**  
version 3  
+ roller/bushing sealing  
+ roller/bushing lubrication

**6 campaigns**  
(in progress)

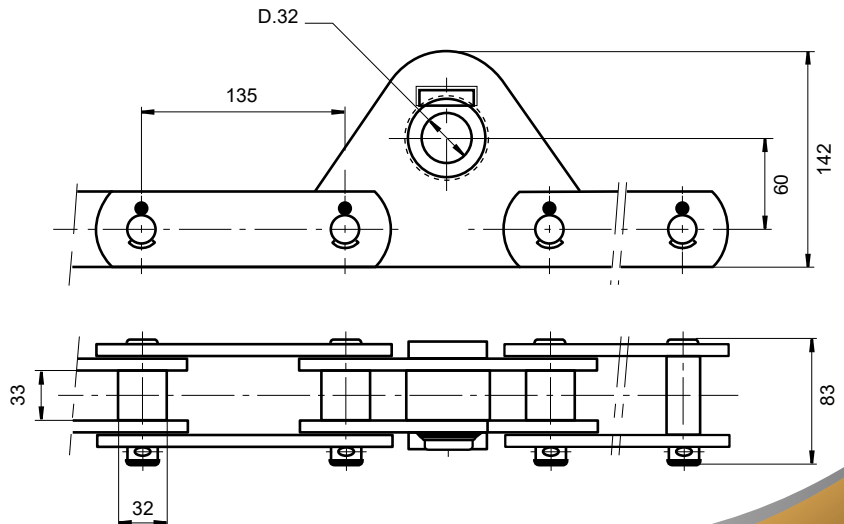
*Service lifetime based on feedback on the same equipment*

**Le Delta® is a specific, unique Sedis process**

**Grass removal chains**

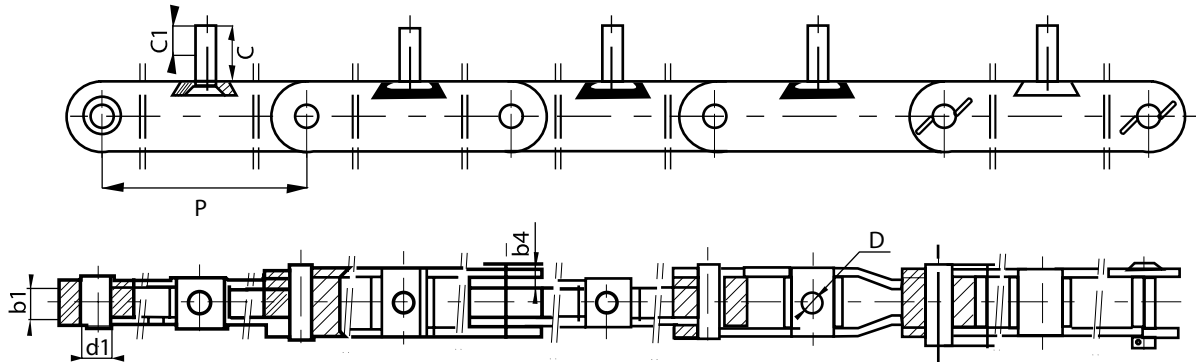
**5453-03**

**Tensile strength 145 kN**



## WATER FILTRATION

### Chains for panel holder rotary filtering screen



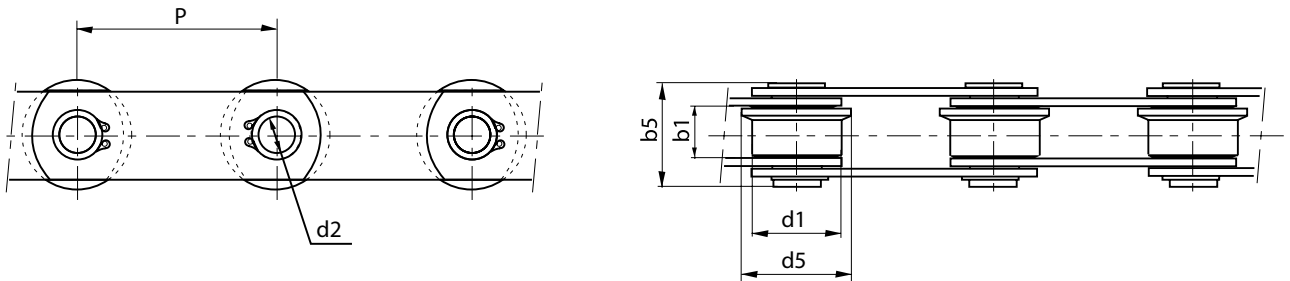
Chain	Pitch	h	b1 min.	b4	d1	D	C1	C	Shouldered bushing & axes	Axial greasing	Plastic roller	DELTA HR version
5462-18	300	60	27	58	50	M16	27	30	X	X		
5087-07	400	70	30	72,5	90	M20	30	47				
5087-08	400	70	30	72,5	70	M20	47	52				X
5087-09	400	70	30	92	70	M20	47	52		X		
5087-10	400	70	30	72,5	70	M20	47	52				X
5087-11	400	70	30	72,5	70	M20	47	52				X
5507-11	500	70	36	85	70	M24	40	52	X	X		
5507-12	500	70	36	85	100	M24	40	67	X	X		
5507-13	500	70	36	85	70	M24	40	52	X			X
5747-09	600	70	38	80	97	M20	35	60	X			X
5747-14	600	70	38	80	97	M20	35	60	X	X(*)	X(*)	
5747-15	600	70	38	80	97	M20	35	60	X			



(\*): with one steel wheel every 10 pitches

### Hollow axis chains for hooked bar screen

Made of steel or stainless steel



Chain	Pitch	b1 min.	d2	b5	d1	d5
5377-05	100	27	18,3	53	45	55
5308-10	200	43	35,5	59	75	90